

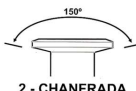

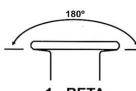

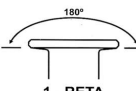
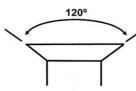

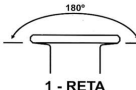


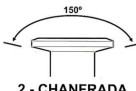


MONTADORA	VEÍCULO	LONA DE FREIO		REBITE TUPÃ	TIPO CABEÇA
	Comerciais Leves	Fras-le	FD58 / FD59 / FD77	CÓD.: 1008FTB J-430 Alternativa: CÓD.: 1008FSB	
		Lonaflex	L562 / L559 / L219		
		Cobreq	0822T / 0821T / 0811T		
		Thermoid	TH258 / TH259 / TH202		
		Duroline	DFW958 / DFW959 / DFW977		
	Comerciais Médios e Pesados	Fras-le	FD87 / FD88 / 4710	CÓD.: 1010FTB J-430 Alternativa: 1010FSB / 6,314,3FTB	 2 - CHANFRADA
		Lonaflex	L223 / L224 / L641		
		Cobreq	0814T / 0815T / 4710T		
		Thermoid	TH165 / TH166 / TH191		
		Duroline	DFW987 / DFW988 / DFW910		
IVECO	Comerciais Médios e Pesados	Fras-le	FD86 / FD 87 / FD88 / 4514G / CA32	CÓD.: 1010FTB J-430 Alternativa: CÓD.: 1010FSB	
		Lonaflex	L222 / L223 / L224 / L136K / L638		
		Cobreq	0812T / 0814T / 0815T / 4514GD / 4644T		
		Thermoid	TH174 / TH165 / TH166 / TH157 / 4516		
		Duroline	DFW986 / DM588 / DFW988 / 4514G / DC332		
	Comerciais Leves	Fras-le	MB193	CÓD.: 0612FTB DIN7338 Alternativa: CÓD.: 1008FTB	
		Lonaflex	L586		
		Cobreq	0124		
		Thermoid	TH161		
		Duroline	DM593		
	Comerciais Médios Freio a Óleo	Fras-le	MB176 / MB180 / MB181 / MB182	CÓD.: 0816FTB DIN 7338 Alternativa: CÓD.: 0815FTB/FSB	 1 - RETA
		Lonaflex	L348 / L501 / L509 / L652		
		Cobreq	0132T		
		Thermoid	TH22 / TH37 / TH38 / TH136		
	Comerciais Médios e Pesados Freio a AR	Fras-le	MB183 / MB184 / MB185 / MB188 / MB190 / MB191	CÓD. 0820FTB 0820FTBPLUS DIN 7338 Alternativa: CÓD.: 0820FSB	
		Lonaflex	L651 / L552 / L551 / L227 / L131 / L133		
		Cobreq	0133T / 0134T / 0135T / 0137T / 0140T / 0141T		
	Thermoid	TH134 / TH133 / TH132 / TH164 / TH148 / TH142			
	Duroline	DM583 / DM584 / DM585 / DM588 / DM590 / DM591			
*Em patins feitos para a reposição apartir de "Chapa Soldada" a espessura é inferior ao patim original "FUNDIDO" podendo ser utilizado nesta situação o rebite: CÓD.: 0818FTB					
	TODOS MODELOS	Fras-le	SV228 / SV229 / SV230 / SV231	CÓD.: 1012FSBSCANIA J-430 Alternativas: CÓD.: 1012 FTBSCANIA	 1 - RETA
		Lonaflex	L307 / L308 / L309 / L310		
		Cobreq	0711 / 0712 / 0713 / 0714		
		Thermoid	TH178 / TH180 / TH179 / TH181		
		Duroline	DS728 / DS729 / DS730 / DS731		
VOLVO	TODOS MODELOS	Fras-le	VV288 / VV289 / VV290	CÓD.: 1012FTBVOLVO J-430 Alternativas: CÓD.: 1012FSB	 3 - CÔNICA
		Lonaflex	L663 / L664 / L665		
		Cobreq	0471T / 0472T / 0720T		
		Thermoid	TH4517 / TH4518 / TH155		
		Duroline	DV888 / DV889 / DV890		
	TODOS MODELOS TGX	Fras-le	MP410 / MP411	CÓD.: TUPÃ 0818FTBPLUS DIN 7338	 1 - RETA
	TODOS MODELOS	Fras-le	ST/350 - ST/351 - ST/352	CÓD.: 1020FTBSINOTRUK DIN 7338	 1 - RETA
CARRETAS / TRUCKS	TODOS MODELOS	Fras-le	4514F/4515C/CA32/CA33/FD81/4710/4718	CÓD.: 1010FTB J-430 Alternativas: CÓD.: 1010FSB	 2 - CHANFRADA
		Lonaflex	L136K / L157A / L638 / L636 / L637 / L640 / L639		
		Cobreq	4514T/4515T/4644T/4533T/4710T/4718T		
		Thermoid	4514 / 4515 / 4516 / TH204 / TH187 / TH191/4718		
		Duroline	4514F/4515C/DC332/DC333/DC381/DFW910/DC718		

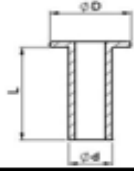
* APLICAÇÕES EM REBITES DE FERRO, CONFORME RECOMENDAÇÃO DAS MONTADORAS.

* AS RECOMENDAÇÕES ACIMA SÃO RESUMIDAS, HAVENDO DÚVIDAS DEVE-SE OBSERVAR O MANUAL DO PROPRIETÁRIO

INDÚSTRIA METALÚRGICA TUPÃ LTDA.

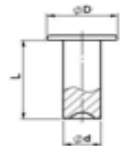
 RODOVIA BR 101 KM 163, Nº 910 - MARGINAL LESTE
 CENTRO - TIJUCAS - SANTA CATARINA - CEP: 88200-000
 FONE: +55 48 3345 2580

www.tupafixadores.com.br



REBITES TUBULARES

Produto	D	d	L	FERRO/AÇO ZINCO ECOLÓGICO (ZINCO BRANCO)	
				Código	
10-8	Tubular	12,3	6,4	12,7	1008FTB
6,3 x 14,3 (10-9 Volks)	Tubular	12,0	6,3	14,3	6,314,3FTB
10-10	Tubular	12,3	6,4	15,9	1010FTB
10-10 Volvo	Tubular	12,0	6,2	15,9	1010FTBVOLVO
10-12	Tubular	12,3	6,4	19,0	1012FTB
10-12 Volvo	Tubular	12,0	6,2	19,0	1012FTBVOLVO
10-12 Scania	Tubular	12,0	6,3	18,0	1012FTBSCANIA
10-14	Tubular	12,3	6,4	22,2	1014FTB
10-14 Volvo	Tubular	12,0	6,2	22,2	1014FTBVOLVO
8 x 15	Tubular	15,5	8,0	15,0	0815FTB
8 x 18	Tubular	15,5	8,0	18,0	0818FTB
8 x 18 PLUS	Tubular	15,5	8,0	18,0	0818FTBPLUS
8 x 20	Tubular	15,5	8,0	20,0	0820FTB
8 x 20 PLUS	Tubular	15,5	8,0	20,0	0820FTBPLUS
8 x 22	Tubular	15,5	8,0	22,0	0822FTB
8 x 25	Tubular	15,5	8,0	25,0	0825FTB



REBITES MACIÇOS

Produto	D	d	L	ALUMINIO	
				Código	
10-10	Maciço	12,3	6,4	15,9	1010AM
10-12	Maciço	12,3	6,4	19,0	1012AM
10-14	Maciço	12,3	6,4	22,2	1014AM
10-14 Volvo	Maciço	12,0	6,2	22,2	1014AMVOLVO
10-14 ESPECIAL	Maciço	12,4	6,5	22,2	1014AMESP
10-16	Maciço	12,3	6,4	25,4	1016AM
13-10	Maciço	15,8	7,7	15,9	1310AM
13-12	Maciço	15,8	7,7	19,0	1312AM
13-14	Maciço	15,8	7,7	22,2	1314AM
13-16	Maciço	15,8	7,7	25,4	1316AM



REBITES SEMI TUBULARES

Produto	D	d	L	ALUMINIO	FERRO/AÇO ZINCO ECOLÓGICO (ZINCO BRANCO)	
				Código	Código	
3,2 x 6 mm Fiat	Semi-Tubular	5,8	3,2	6,0	3,206AS	-
4-5	Semi-Tubular	7,0	3,5	7,9	0405AS	-
4-6	Semi-Tubular	7,0	3,5	9,5	0406AS	-
4-7	Semi-Tubular	7,0	3,5	11,1	0407AS	-
7-6	Semi-Tubular	9,3	4,7	9,5	-	0706FSB
7-7	Semi-Tubular	9,3	4,7	11,1	0707AS	0707FSB
7-8	Semi-Tubular	9,3	4,7	12,7	0708AS	0708FSB
7-10	Semi-Tubular	9,3	4,7	15,9	0710AS	-
10-8	Semi-Tubular	12,3	6,4	12,7	-	1008FSB
6,3 x 14,3 (10-9 Volks)	Semi-Tubular	12,0	6,3	14,3	-	6,314,3FSB
10-10	Semi-Tubular	12,3	6,4	15,9	1010AS	1010FSB
10-12	Semi-Tubular	12,3	6,4	19,0	1012AS	1012FSB
10-12 Volvo	Semi-Tubular	12,0	6,2	19,0	-	1012FSBVOLVO
10-12 Scania	Semi-Tubular	12,0	6,3	18,0	-	1012FSBSCANIA
10-14	Semi-Tubular	12,3	6,4	22,2	1014AS	1014FSB
10-14 Volvo	Semi-Tubular	12,0	6,2	22,2	-	1014FSBVOLVO
10-14 ESPECIAL	Semi-Tubular	12,3	6,4	22,2	1014ASESP	-
10-16	Semi-Tubular	12,3	6,4	25,4	1016AS	-
13-10	Semi-Tubular	15,8	7,7	15,9	1310AS	-
13-12	Semi-Tubular	15,8	7,7	19,0	1312AS	-
13-14	Semi-Tubular	15,8	7,7	22,2	1314AS	-
13-16	Semi-Tubular	15,8	7,7	25,4	1316AS	-
08 x 15	Semi-Tubular	15,5	8,0	15,0	-	0815FSB
08 x 18	Semi-Tubular	15,5	8,0	18,0	-	0818FSB
08 x 20	Semi-Tubular	15,5	8,0	20,0	-	0820FSB
08 x 22	Semi-Tubular	15,5	8,0	22,0	-	0822FSB
08 x 25	Semi-Tubular	15,5	8,0	25,0	-	0825FSB



Member of CISQ Automotive
RINA
ISO/TS 16949
Certified Quality System



Miembro de CISQ Federation
RINA
ISO 9001:2008
Sistema de Calidad Certificado